

GENESIS

GENESIS
CHAPTER
THREE



ShareFaith
KIDS



THE FALL OF MAN

THE FALL

AFTER CREATION, ADAM AND EVE LIVED IN THE BEAUTIFUL GARDEN GOD CREATED CALLED THE GARDEN OF EDEN.

ADAM AND EVE WERE FREE TO ENJOY IT AND DO AS THEY PLEASED, EXCEPT FOR ONE THING.

GOD FORBADE THEM TO EAT OF ONE TREE: THE TREE OF THE KNOWLEDGE OF GOOD AND EVIL, WHICH STOOD IN THE MIDDLE OF THE GARDEN.



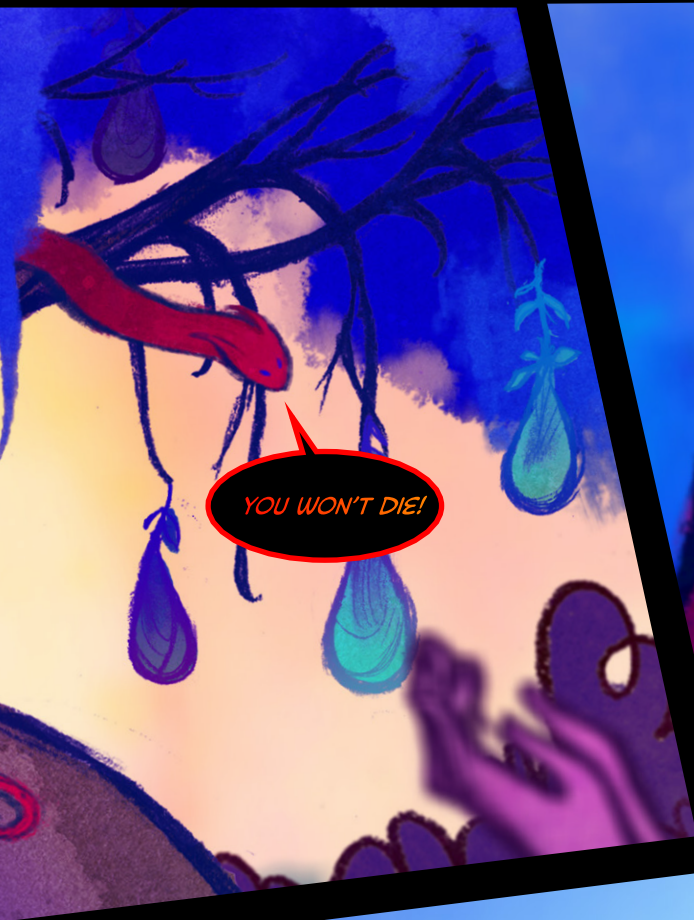
ONE DAY, WHILE EVE WAS STROLLING THROUGH THE GARDEN, SHE MET A SERPENT WHO WAS ACTUALLY THE DEVIL IN DISGUISE.

DID GOD TELL YOU THAT YOU COULD EAT FROM ANY OF THE TREES?

ALL EXCEPT ONE.

WE CANNOT EAT FROM THE TREE IN THE MIDDLE, NOT EVEN TOUCH IT.

IF WE DO, WE WILL DIE.



YOU WON'T DIE!



IN FACT, GOD KNOWS THAT IF YOU EAT IT, YOU'LL BE LIKE GOD, KNOWING GOOD AND EVIL!

EVE LOOKED AT THE TREE.

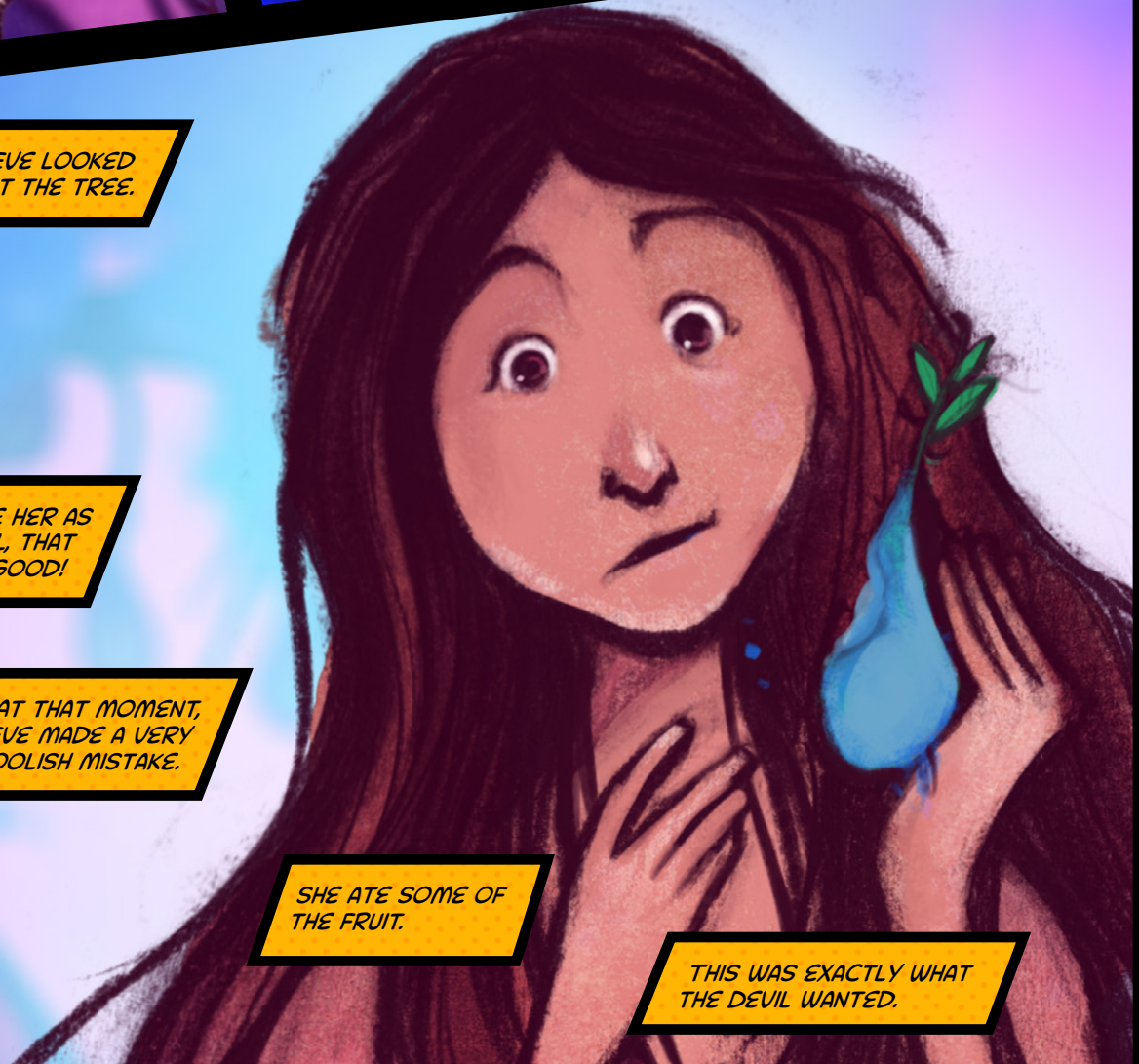
IT DID LOOK GOOD.

IF IT WOULD MAKE HER AS WISE AS GOD, WELL, THAT WOULD BE REALLY GOOD!

AT THAT MOMENT, EVE MADE A VERY FOOLISH MISTAKE.

SHE ATE SOME OF THE FRUIT.

THIS WAS EXACTLY WHAT THE DEVIL WANTED.



THEN, SHE SAW ADAM
AND HANDED HIM SOME
OF THE FRUIT.

EVEN THOUGH ADAM KNEW THEY
WERE NOT SUPPOSED TO EAT
THE FRUIT FROM THAT TREE, HE
TOOK A BITE.

ADAM AND EVE BROKE
THE ONLY RULE GOD
GAVE THEM.

THE DEVIL'S LIE DECEIVED THEM
AND HIS PLAN WORKED.



AT THAT MOMENT, ADAM AND EVE'S EYES OPENED TO A WHOLE NEW REALITY.

The top section of the comic is divided into three panels. The left panel shows Adam and Eve in a lush green garden, looking distressed with their hands on their heads. The middle panel is a close-up of dense green foliage. The right panel is another close-up of foliage. The bottom section is a large panel showing a glowing yellow silhouette of God against a bright, hazy background, with a speech bubble.

THEY SAW THAT THEY WERE NAKED AND SUDDENLY UNDERSTOOD THE DIFFERENCE BETWEEN GOOD AND EVIL.

THEY WERE SO ASHAMED THAT THEY TRIED TO COVER THEIR NAKED BODIES WITH LEAVES, AND DECIDED TO HIDE FROM GOD.

LATER THAT EVENING, AS GOD WAS STROLLING THROUGH THE GARDEN, HE LOOKED FOR ADAM AND EVE.


ADAM? EVE?
WHERE ARE
YOU?



NAKED AND AFRAID, ADAM AND EVE WERE HIDING FROM GOD.

GOD KNEW THEY HAD SINNED.

ADAM BLAMED EVE AND EVE BLAMED THE SERPENT.



GOD WAS FURIOUS THAT THE DEVIL TRICKED THEM, BUT MORE SO THAT THEY HAD BELIEVED THE DEVIL'S LIE.

GOD CURSED THE SERPENT AND
BANISHED ADAM AND EVE FROM THE
GARDEN OF EDEN.

HE PUT ANGELS WITH FLAMING
SWORDS AT THE ENTRANCE.

YOU WILL NOT
LIVE FOREVER
AND ONE DAY YOU
BOTH WILL DIE!



THEIR LIVES WOULD BE FILLED
WITH HARDSHIP AND MISERY.

A man and a woman, Adam and Eve, are depicted in a desolate, reddish-orange landscape. The woman is on the left, wearing a simple brown tunic and sandals, holding a long wooden staff. She is looking down with a sad expression. The man is on the right, also in a brown tunic and sandals, holding a long wooden staff. He is looking up with a pained expression. The background is a hazy, reddish-orange sky and ground.

THIS WAS THE CONSEQUENCE
OF THEIR DISOBEDIENCE.

BECAUSE ADAM AND EVE SINNED,
THE WORLD WOULD NEVER BE
THE SAME.

THEIR DISOBEDIENCE WOULD CAUSE
EVERY PERSON IN THE WHOLE
WORLD TO BE BORN INTO SIN.



IN THE FUTURE, GOD WOULD SEND
HIS OWN SON IN THE FORM OF A
HUMAN TO REDEEM AND...

A man with a long brown beard and a golden crown is depicted in a bright, golden light. He is wearing a white robe and has his arms outstretched in a gesture of blessing or offering. The background is a bright, golden light with some purple and blue streaks.

...TAKE AWAY THE SIN OF THE
WORLD AND OFFER ETERNAL LIFE
TO ANYONE WHO BELIEVES IN HIM.

THE END